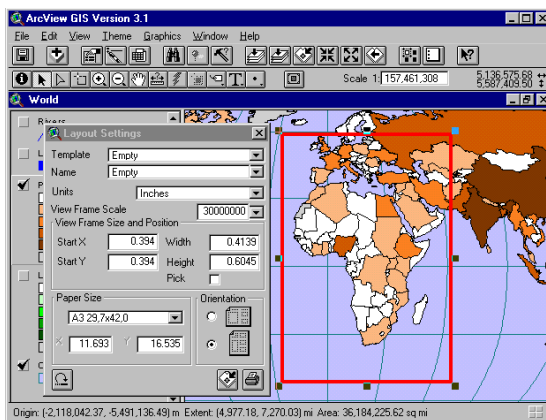


# Av Layout's Tables

## BENEFIT:

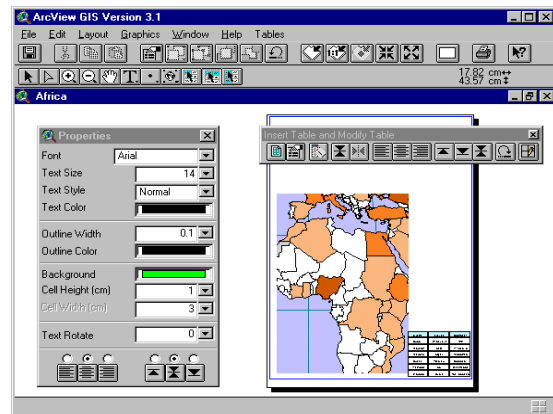
- ✓ Easy to create a Layout specifying scale, paper size and orientation.
- ✓ Did you try to create a table in the Layout? Did you try to add a row to the table, or to change the column width? It is easy to do with this program.
- ✓ Also simple to import attribute data to the created tables.
- ✓ What do you do, if you want to use the prepared table in another Layout? Draw it over again? With Av Layout's Tables you can save the layout with tables as a template. You can use this template to create other layouts.
- ✓ So, with this program you can conveniently and quickly create maps.



## SOME FUNCTIONS OF THE PROGRAM:

- **Create a Layout from the View:**
  - Specify the area of the map;
  - Specify scale;
  - Specify paper size and orientation;
  - Use prepared templates.

- **Create and modify tables in the Layout. Some functions:**
  - Add and remove rows and columns;
  - Change the row and column height in a table;
  - Change the font name, font size, font style and font color;
  - And much more.
- **Import data to the tables:**
  - All attribute data;
  - Only selected attribute data.
- **Create your own templates with the tables.**



**ESRI**  
Technology

AUTHORIZED  
DEVELOPER



info@infoera.it